



Grasshopper Anti Flap Kit

Manufactured in Australia by Sunbuster Shades.

For assistance please call 0429 846 628

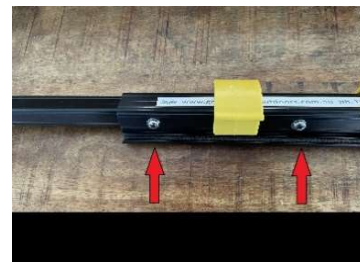
to suit Carefree Electric box awning

- Contents:**
- 1 x Grasshopper bars set (4 pieces + 2 inner pieces)
 - 16 x Grasshopper Yellow Clips
 - 1 x Fittings kit (2 x stainless brackets, 4 x pop rivets, 2 x M6 metal screws with washers, 2 x black knobs with backing plates).
 - 1 x Instructions sheet

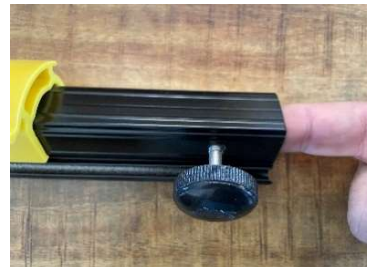
We recommend a Long Series 5mm drill bit for easier installation (not supplied)

Assembly of the bars

Remove the M6 screw from the outer bar, slide the inner bar out and rotate 180 degrees then slide back into the outer bar and line up the two holes. Re-insert the M6 screws you removed earlier and insert a second M6 screw from the fittings kit. Repeat on the second bar.



Place a backing plate on your finger and place upwards through the hole in the other outer bar and screw the black knob in until it just touches your finger. Repeat on the second bar.



Slide the two sections together making sure the tracks are on the same side of each bar. The two bars are a mirror image for opposite ends of the awning. When fitted the sail tracks are under the vinyl and the Yellow Clips are on the outside.

Fitting the brackets (saddles) to the awning

Set up the awning ready for use. When fitted the anti flap bar should be just below the awning vinyl, the edge of the vinyl should line up with the edge of the bar. The centre of the saddle is 18mm below the vinyl and 18mm in from the edge of the vinyl. This should locate the edge of the slot in the saddle with the edge of the awning vinyl. The height should allow the two holes to be drilled on the top edge of the ridge which runs across the inside of the awning case. Once marked, put the bracket onto the end of the anti flap bar and test fit to ensure the vinyl will not be pinched or damaged between the bar and the top of the awning case.





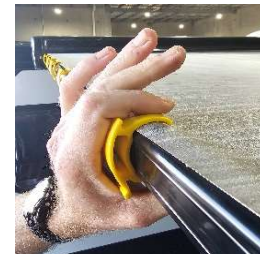
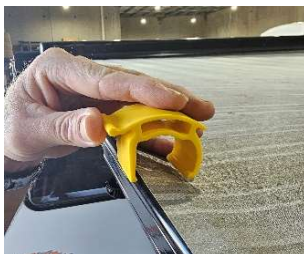
Place a piece of paper with masking tape inside the case below the holes before drilling to reduce debris being trapped inside the awning case which may damage the awning or blow into your eyes next time you set up. Drill the holes using a 5mm drill bit. Ensure the drill chuck does not damage your awning vinyl when drilling, place a piece of cardboard between the drill and vinyl if necessary. AVOID drilling into the body of the motorhome. Insert the pop rivets to attach the saddles.



To place the anti flap bar into the bracket, start low and line up the wobbly spigot with the slot in the saddle. Gently lift the bar wiggling with your wrist to prevent the fittings from binding as you go. Once the bar is up to the vinyl loosen the black knob and extend the bar so the slot end sits over the black plastic guide (this can be moved to line up with the vinyl edge). Grip the inner bar with your hand and press your thumb against the outer section to wedge the anti flap bar firmly into place and tighten the black knob.



Rotate the yellow clips off one at a time starting from the bottom. Place the clip over the vinyl with the opening facing the ground and gently push downward so the clip starts to naturally rotate, continue in a rotating motion until the clip "clicks" into place. Repeat for all eight clips.



With the anti flap Kit in place you can now add walls feeding from the gap in the centre of the bar out towards each end. NOTE: Seams and tags are on the INSIDE of the shades.

